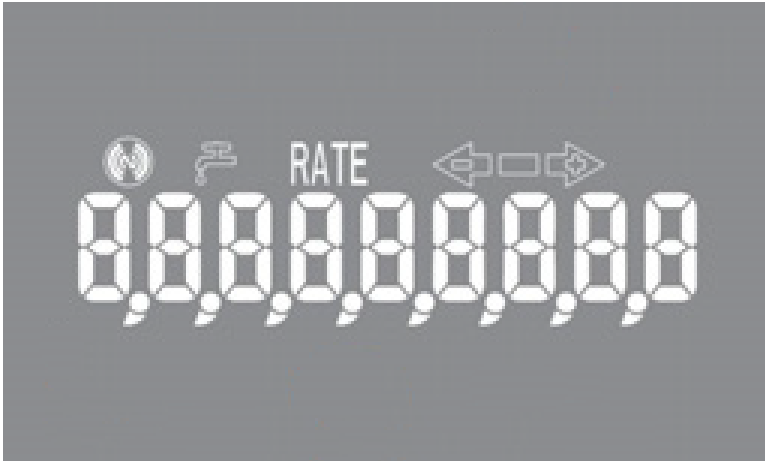


How to Read Your Meter

It is important to familiarize yourself with the information on your meter. To identify this information, the following icons and displays are helpful.



Nine-digit LCD displays the meter reading in billing units of measure (cubic feet). The number is shown in odometer style, reading left to right.



Flow/leak indicator shows the direction of flow through the meter:

- ON** Water in use.
- OFF** Water not in use.
- Flashing** Water is running slowly/low flow indication.

RATE

Average flow rate is displayed every six seconds on LCD display.



Leak indicator displays a possible leak:

- OFF** No leak indicated.
- Flashing** Intermittent leak indicated. Water used during at least 50 of the 96 15-minute intervals during the previous 24-hour period.
- Continuous ON** Continuous leak indicated. Water used during all 96 15-minute intervals during the previous 24-hour period.