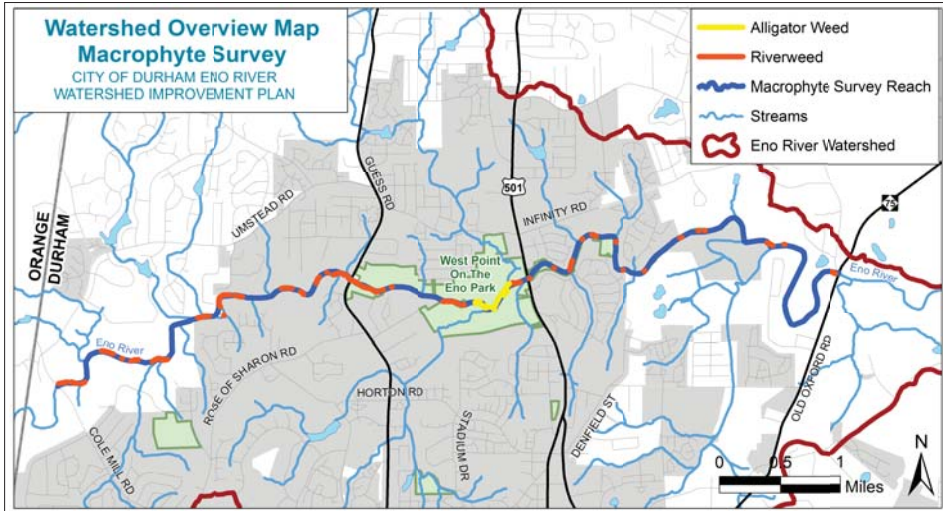


Aquatic Plant Surveys in the Eno River



Biologists collect (left) and identify (right) aquatic plant species in the Eno River.

Aquatic Vegetation Survey Results (Aug 2017)



Biologist recording data on aquatic plants in the Eno River



Riverweed
Podostemum cerratophyllum
(native)



Hydrilla
Hydrilla verticillata
(invasive)



Parrot Feather
Miriophyllum aquaticum
(invasive)



Alligator Weed
Alternanthera philoxeroides
(invasive)

Bed Density	No. of Beds	Total Bed Length (ft)	Linear Coverage (%)
Sparse	26	4011	7.8
Moderate	9	4729	9.2
Dense	2	1226	2.4
Total	37	9,967	19.3

Sparse	0	-	0
Moderate	0	-	0
Dense	0	-	0
Total	0	-	0

Sparse	0	-	0
Moderate	0	-	0
Dense	0	-	0
Total	0	-	0

Sparse	7	342	0.7
Moderate	3	519	1.00
Dense	4	635	1.2
Total	14	1,496	2.9

In August 2017, biologists surveyed 9.8 miles of the Eno River for riverweed, hydrilla, parrot feather and alligator weed. Surveys documented an increase in the number of riverweed beds compared to 2013; however, there was a decrease in the total bed density. Biologists did not locate any hydrilla or parrot feather. Alligator weed was not identified in 2013, but it was found in the 2017 survey.

Riverweed provides important habitat for fish and aquatic macroinvertebrates. Hydrilla, parrot feather and alligator weed are non-native species that can out-compete native vegetation and negatively impact fish communities and recreational uses.



Riverweed Riffle

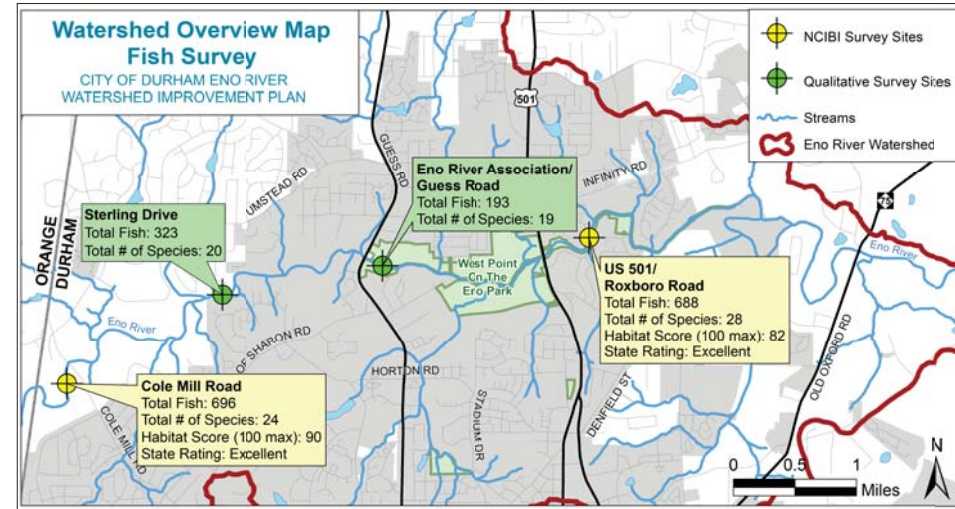


Riverweed Run

Fish Surveys in the Eno River



High quality habitat at Cole Mill Rd. (left) Eno River at US 501 (right).



Survey results document high quality habitat and healthy fish communities in the Eno River. Four of the species observed during the 2017 survey are included on the 2016 NC Natural Heritage Program rare animal list. These species require good stream habitat with high water quality and were consistently located at Eno River sampling sites.

Observed Fish Species included on the 2016 NC Natural Heritage Rare Animal List

Scientific Name	Common Name	NC Status ^a	US Status ^b
<i>Ambloplites cavifrons</i>	Roanoke Bass	SR	FSC
<i>Etheostoma flabellare</i>	Fantail Darter	W5	~
<i>Etheostoma vitreum</i>	Glassy Darter	W5	
<i>Lythrurus matutinus</i>	Pinewoods Shiner	W2	

^aSR-significantly rare, W(#)-watch categories; ^bFSC-Federal Species of Concern



Biologist surveying fish at Cole Mill Road Site



Fish identification at US 501 Site



Pinewoods Shiner (*Lythrurus matutinus*)



Roanoke Bass (*Ambloplites cavifrons*)



White Shiner (*Luxilus albeolus*)



Shorthead Redhorse (*Moxostoma macrolepidotum*)



Satinfish Shiner (*Cyprinella analostana*)