

**Cerelyn “C.J.” Davis**  
Chief of Police

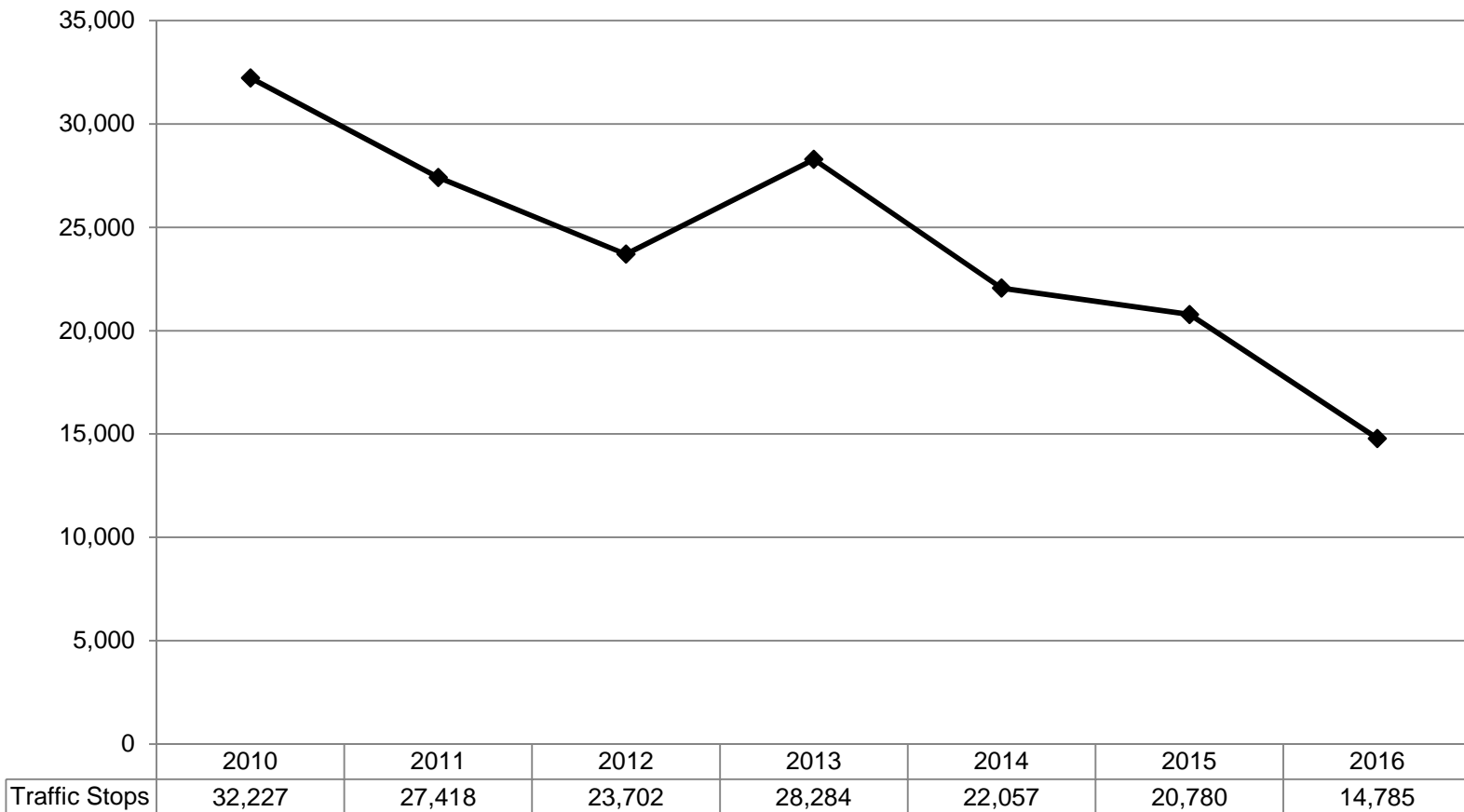
**DURHAM POLICE DEPARTMENT**

**2016 Traffic Stop Report**

**May 1, 2017**

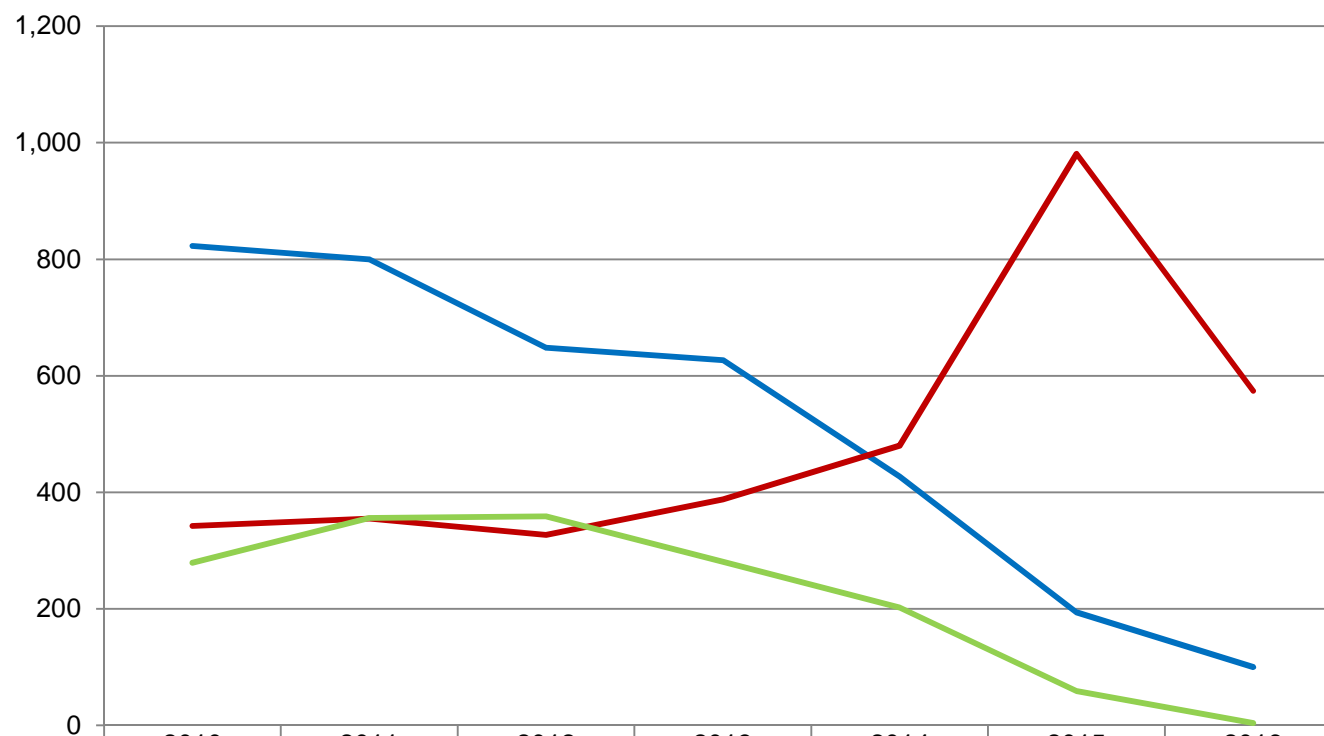


## Total Traffic Stops by Year



- Traffic stops down 29% from 2015, 54% from 2010; demographics relatively unchanged
- Vehicle equipment/regulatory violations down from 39% of stops in 2010 to 29% in 2016

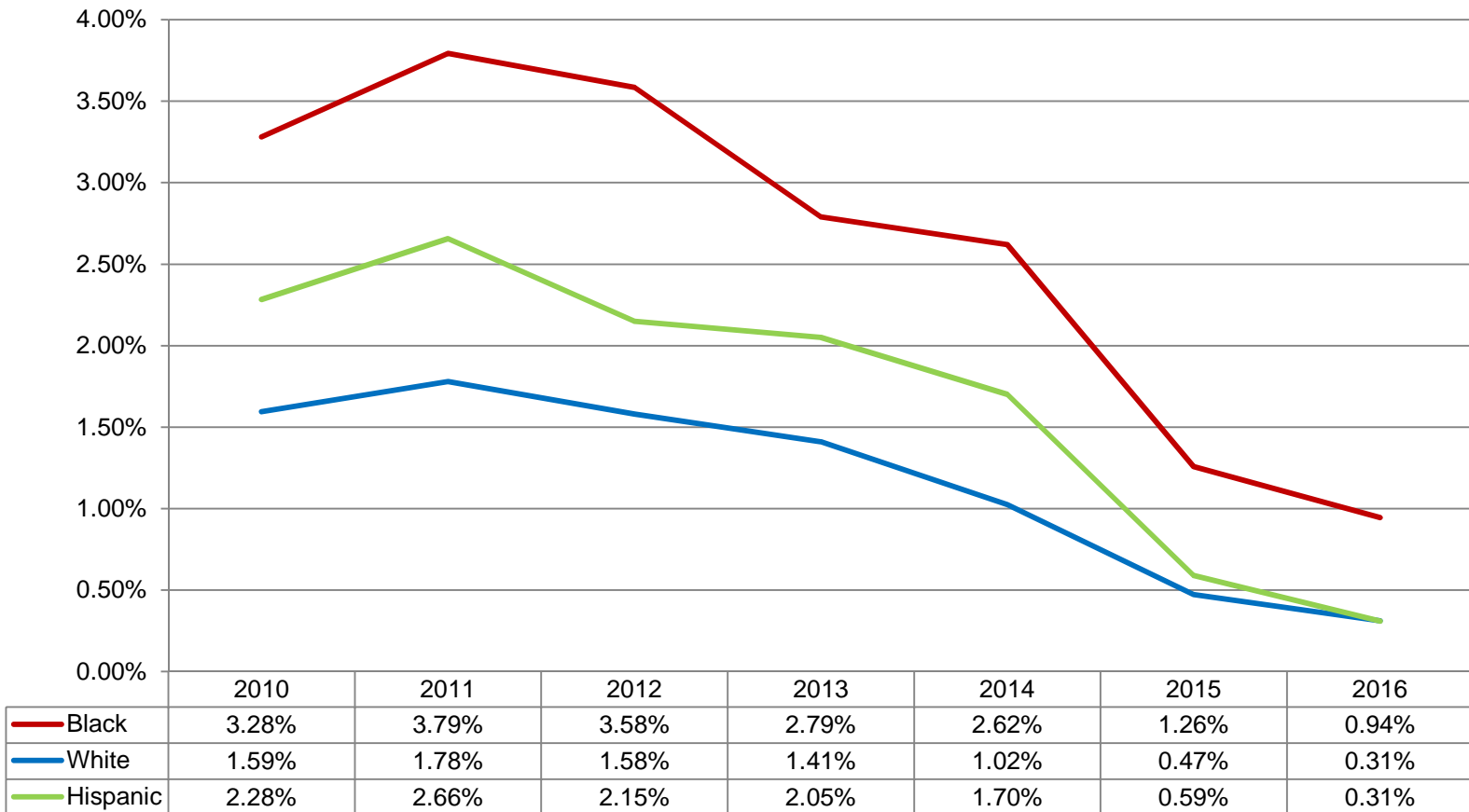
## Total Searches by Year



	2010	2011	2012	2013	2014	2015	2016
Consent	823	800	648	627	427	194	100
Probable Cause	342	355	327	388	480	981	574
Multiple Search Types	279	356	359	281	202	59	4

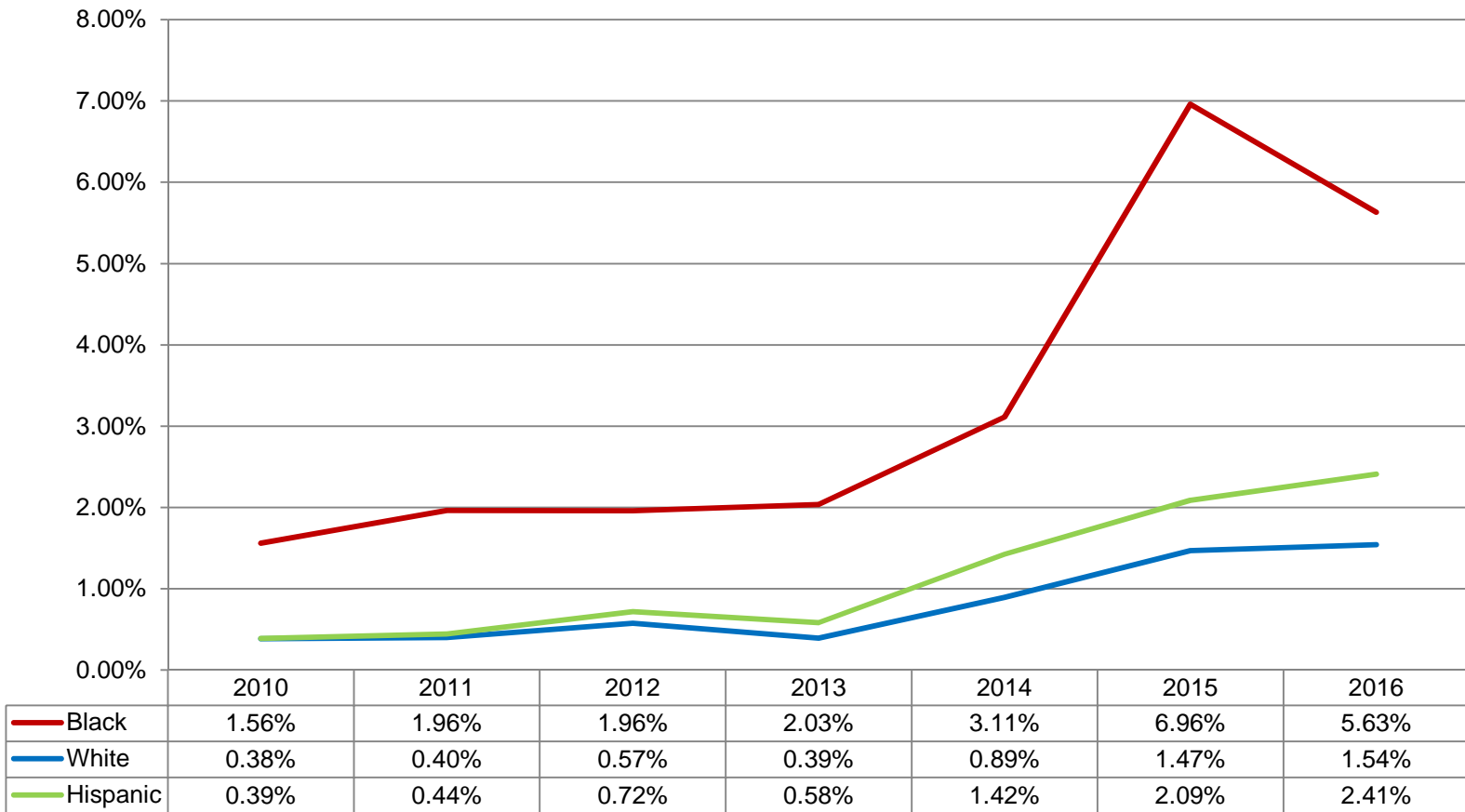
- Computer software started preventing multiple search types from being used in 2015
- Most 'multiple search types' were a combination of both consent and probable cause

## Percent of Stops with Consent Search



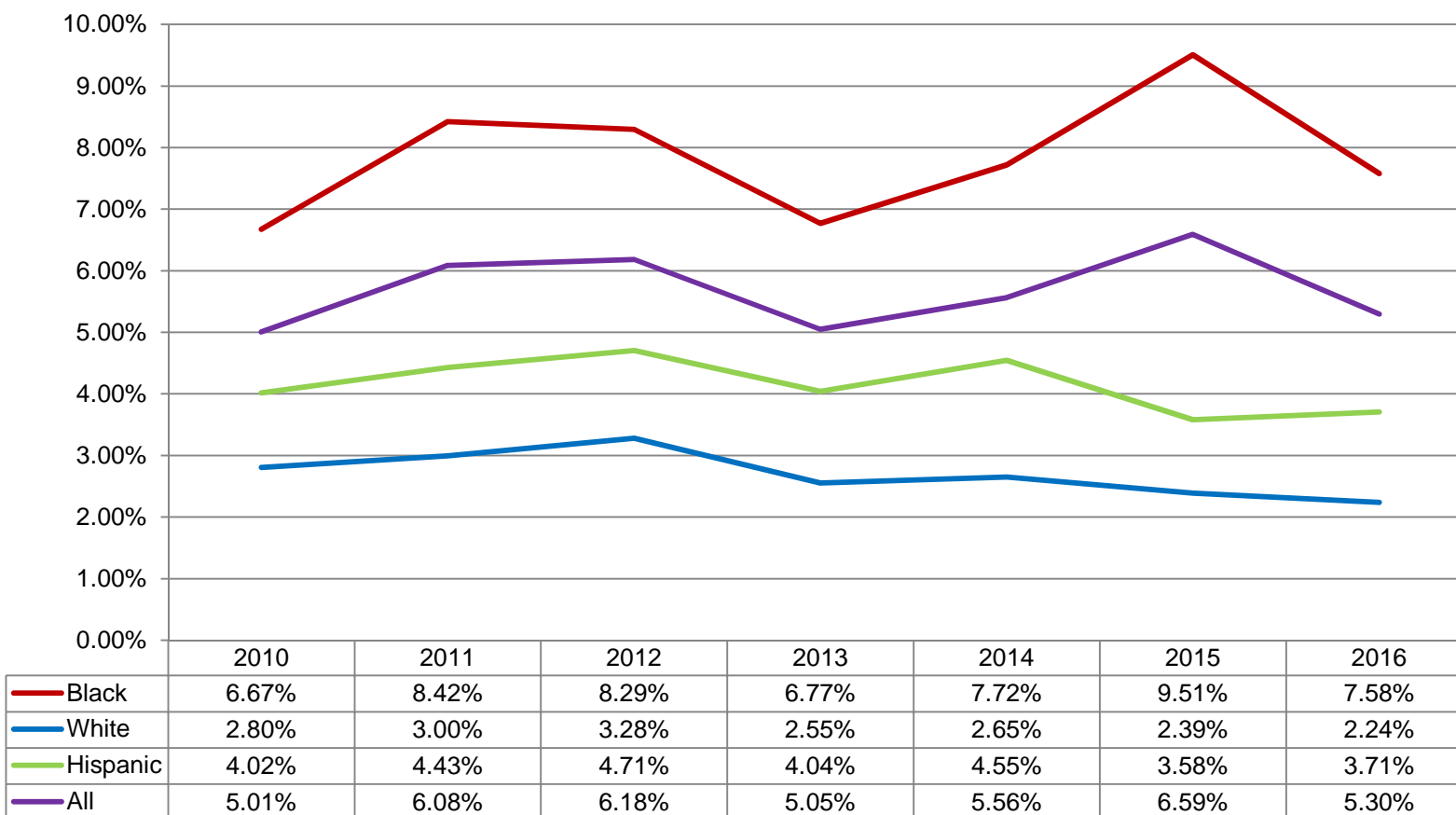
- Written consent for searches to vehicles was implemented as a policy in October 2014
- The 'hit rate' for consent searches was 14.00% in 2016, up from 11.01% in 2014

## Percent of Stops with Probable Cause Search



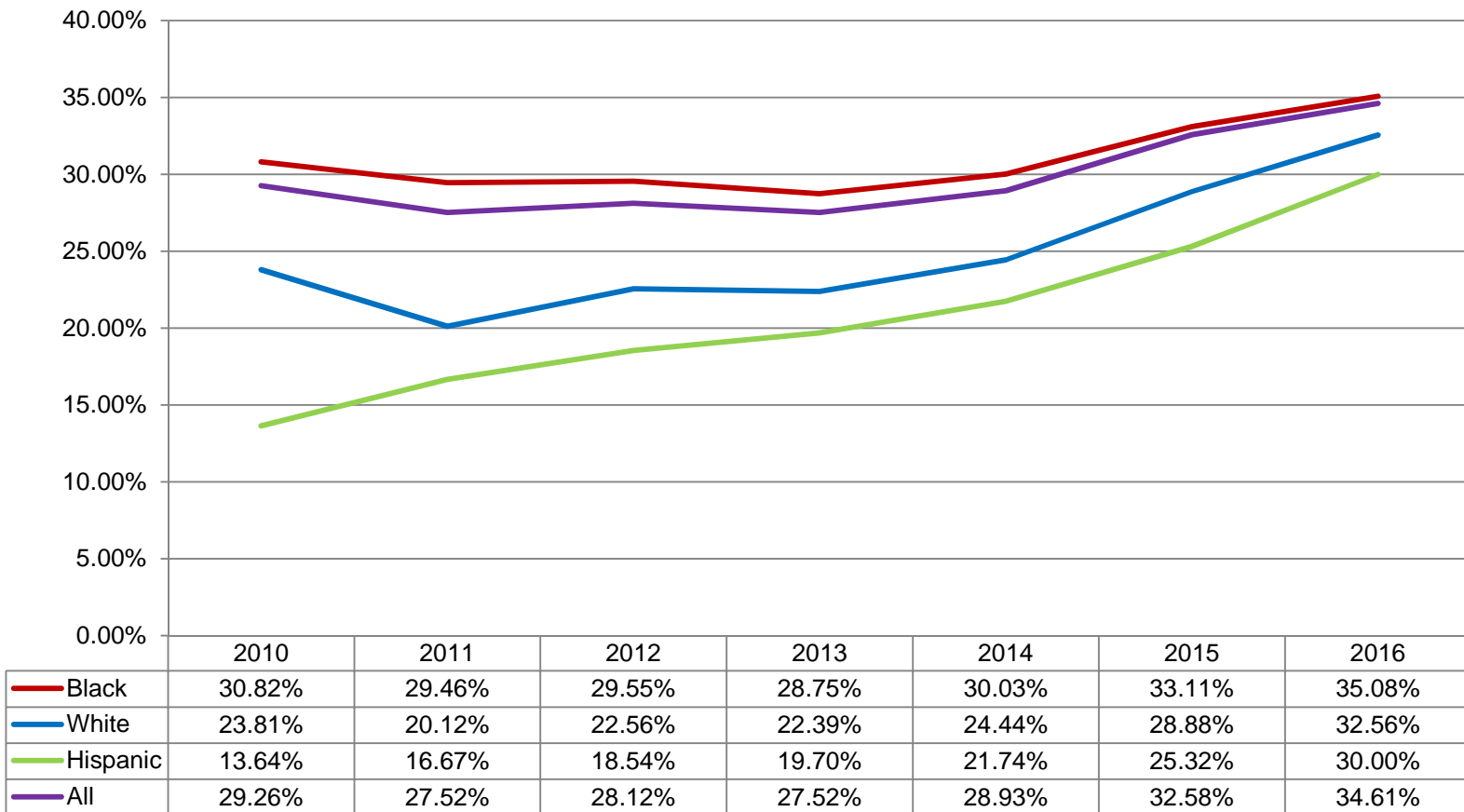
- Written consent for searches to vehicles was implemented as a policy in October 2014
- The 'hit rate' for probable cause searches was 42.33% in 2016, down from 45.42% in 2014

## Total Percent of Stops with a Search



- In 2016, searches with Black drivers occurred at a rate 3.38 times that of White drivers
- Total searches with Black drivers dropped from 1,172 in 2015, to 650 in 2016 (↓44.5%)

## Total Percent of Searches with a Hit



- A 'hit' is defined as a search in which any type of contraband (i.e. drugs, money, weapons, etc.) is located, regardless of whether it was the type originally being sought

## Traffic Stop Trend Analysis

- Traffic stops are down significantly over the last seven (7) years
- The overall rate of search has remained relatively constant, with a shift from consent to probable cause
- The hit rate for searches has climbed steadily over the past three (3) years