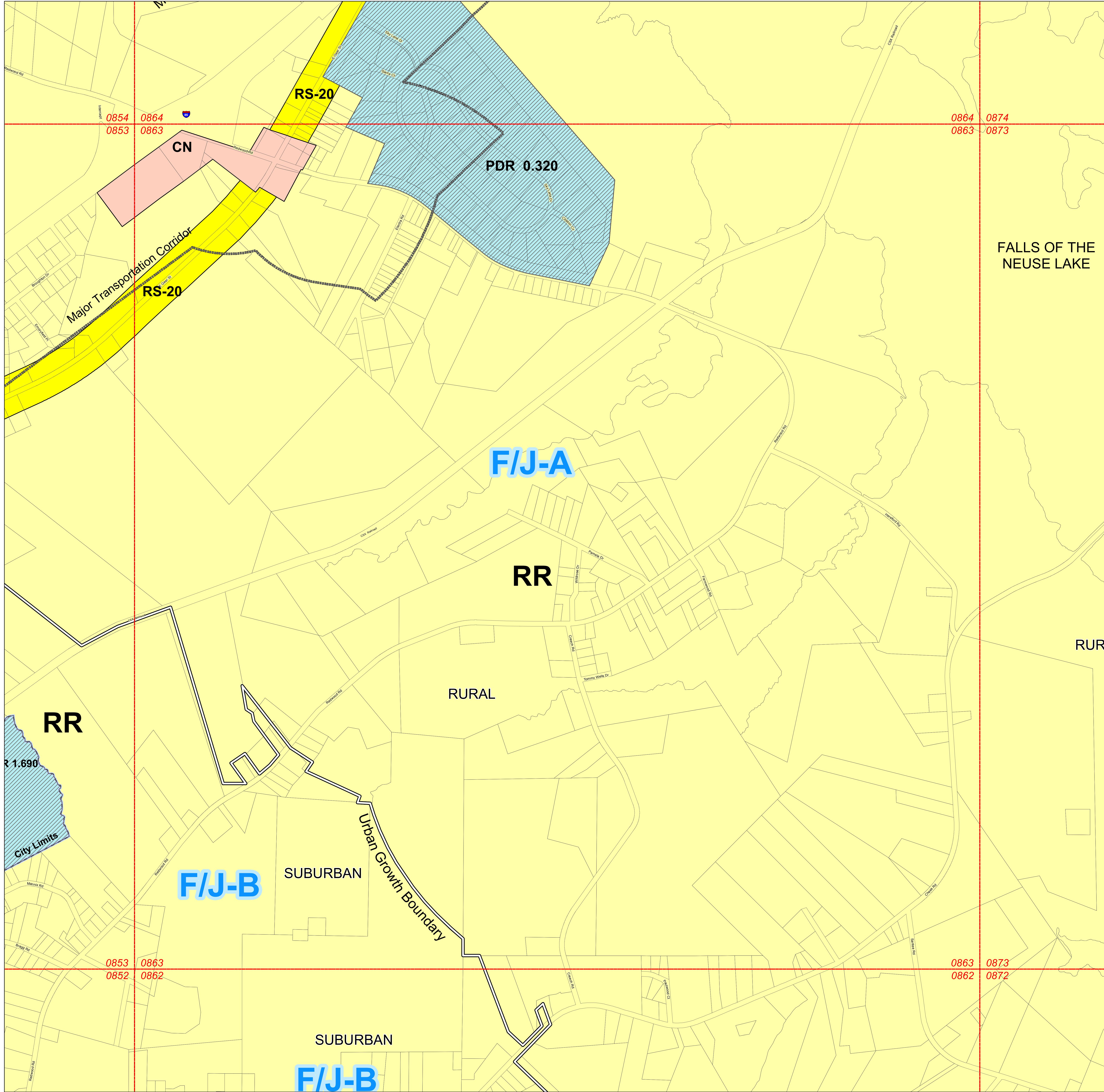
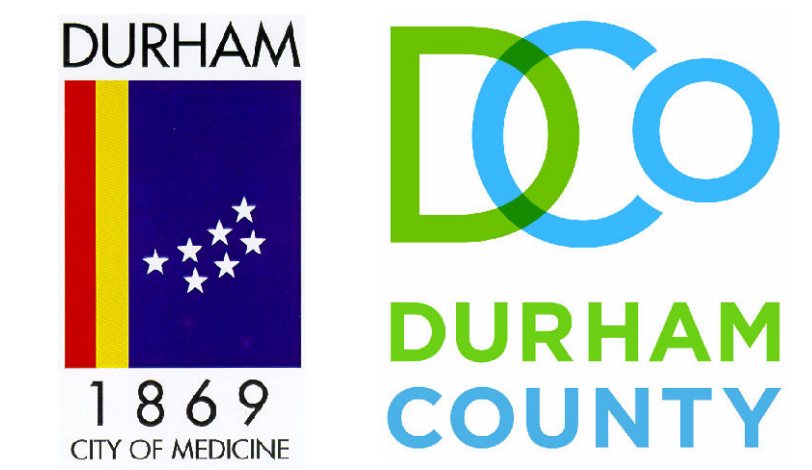


# Durham Zoning Atlas

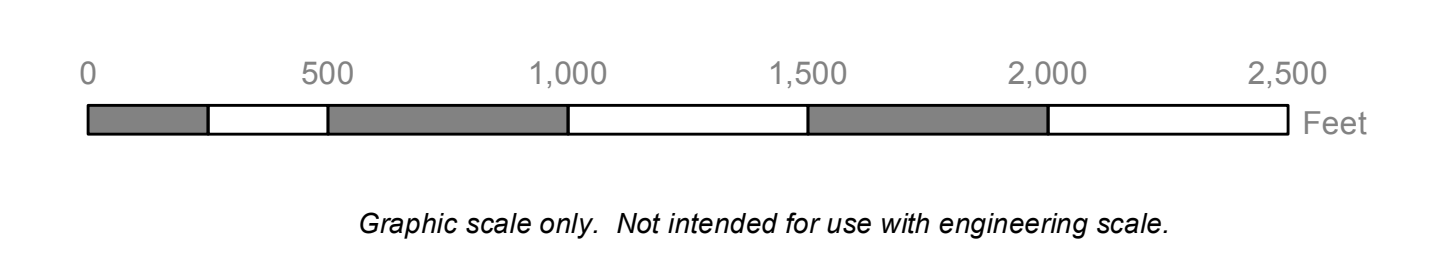
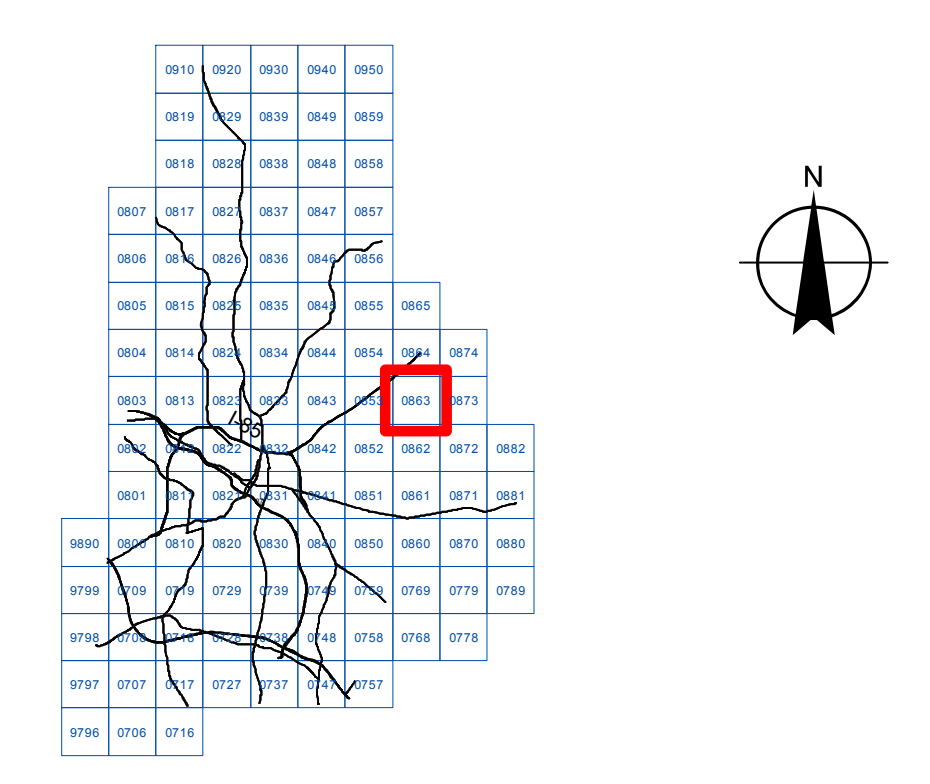
## Map 0863



FALLS OF THE NEUSE LAKE

### LEGEND

- CITY LIMITS
  - COUNTY BOUNDARY
  - MAJOR TRANSPORTATION CORRIDOR OVERLAY
  - WATERSHED OVERLAY
  - DISTRICT BOUNDARY
- |                              |                                     |
|------------------------------|-------------------------------------|
| Development Tiers            | Historic District Overlay           |
| Airport Overlay 60 to 65 LDN | Neighborhood Protection Overlay     |
| Airport Overlay above 65 LDN | Zoning District w/ Development Plan |
| Transitional Office Overlay  |                                     |
- |                        |                                     |
|------------------------|-------------------------------------|
| PDR-VLR (< 2 du/ac)    | Design District Support 1           |
| PDR-LDR (2 - 4 du/ac)  | Design District Support 2           |
| PDR-MDR (4 - 8 du/ac)  | Design District Pedestrian Business |
| PDR-HDR (8 - 12 du/ac) | CC                                  |
| PDR-VHR (> 12 du/ac)   | CI                                  |
| RR                     | CN                                  |
| RS-20                  | OI                                  |
| RS-10                  | CG                                  |
| RS-8                   | I                                   |
| RS-M                   | IL                                  |
| RU-5                   | IP                                  |
| RU-5(2)                | MU                                  |
| RU-M                   | SRP                                 |
| RC                     | UC                                  |
| Design District Core   | Other Jurisdictions                 |



Information depicted herein is for reference purposes only and is compiled from the best available sources. The City of Durham and Durham County assumes no responsibility for errors arising from the misuse of this map. Contact the Durham City-County Planning Department at (919) 560-4137 to verify the status of the information shown on the map.